



MIMO XR™ 802.11g PCI Adapter

Model # AWLH5025

User's Manual

Ver. 1A

Table of Contents

1. Introduction.....	3
1.1 Package Contents	3
2. Installation.....	4
2.1 Install Driver & Utility.....	4
2.2 Verify Driver Installation.....	8
3. Configure the Wireless PCI Adapter	10
4. Configure the Wireless Utility	15
4.1 Link Information.....	15
4.2 AP List	17
4.3 Configure Encryption Settings.....	18
4.4 Profile Setting	23
4.5 Static IP Setting.....	27
4.6 About.....	28
Technical Support	29

1. Introduction

Thank you for purchasing the MIMO XR™ Wireless PCI Adapter. When used with other Airlink101™ MIMO XR™ wireless products, the wireless signal range extends farther than standard 802.11g products.

This Adapter supports 64/128-bit WEP data encryption that protects your wireless network from eavesdropping. It also supports WPA (Wi-Fi Protected Access) feature that combines IEEE 802.1x and TKIP (Temporal Key Integrity Protocol) technologies. Client users are required to authorize before accessing the APs or AP Routers, and the data transmitted through the network is encrypted/decrypted by a dynamically changing secret key.

1.1 Package Contents

Before you begin the installation, please check the items of your package. The package should include the following items:

- One MIMO XR™ Wireless PCI Adapter
- One Detachable Antenna
- One Quick Installation Guide
- One Installation CD (Driver/Utility/Manual)

2. Installation

2.1 Install Driver & Utility

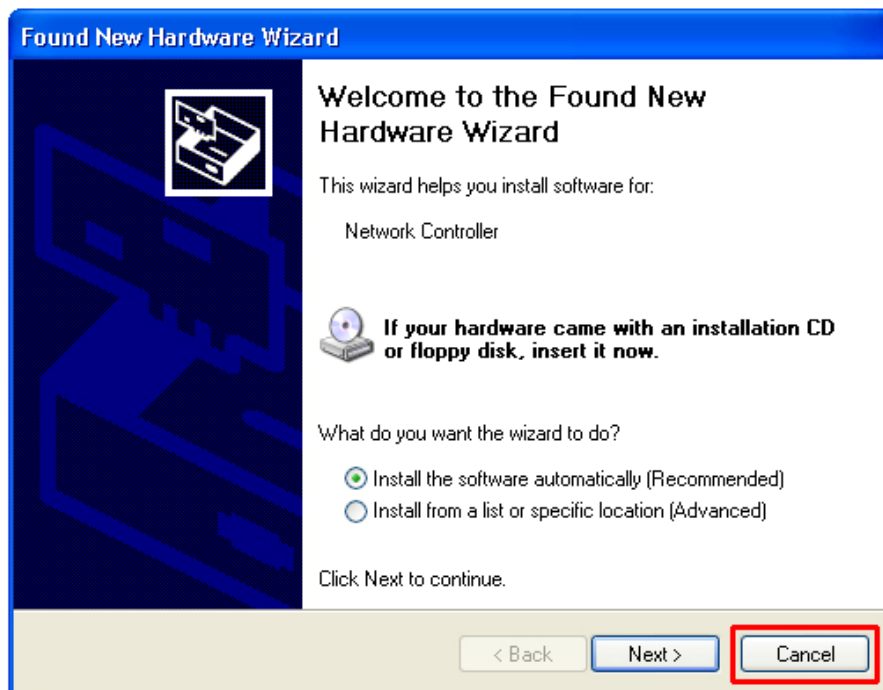
This section provides instructions on how to install the **MIMO XR™ Wireless PCI Adapter**. The driver is installed along with the utility.

Note: Be sure to turn off your computer before inserting the Adapter.

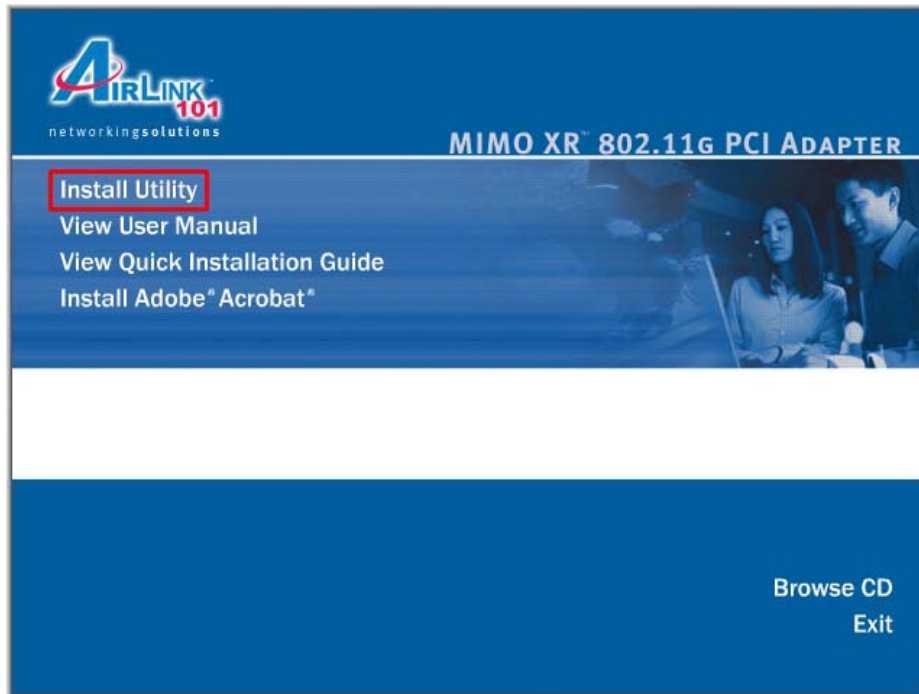
For Windows 98SE and ME users, you may be prompted to insert the Windows 98SE or ME CD during the driver installation. Be sure to have your Windows 98SE or ME CD ready.

Step 1 Insert the PCI adapter into an available PCI slot and turn on your computer.

Step 2 After turning on the computer, Windows will launch the **Found New Hardware Wizard**. The Found New Hardware Wizard appears differently depending on your operating system. Click **Cancel** to quit the wizard and insert the Driver & Utility CD into your CD drive.

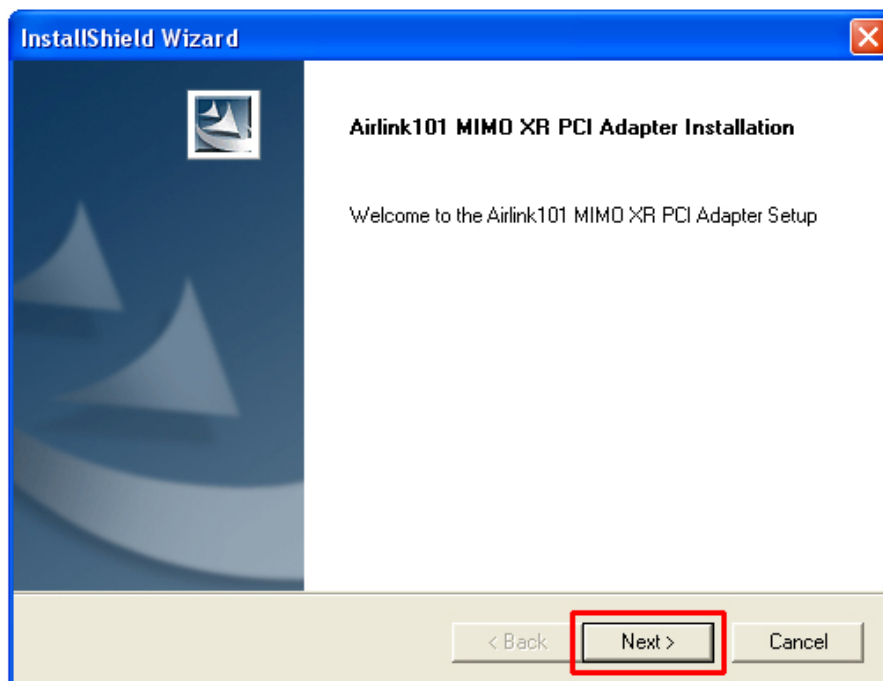


Step 3 The Autorun screen will pop up. Select **Install Utility** from the menu.

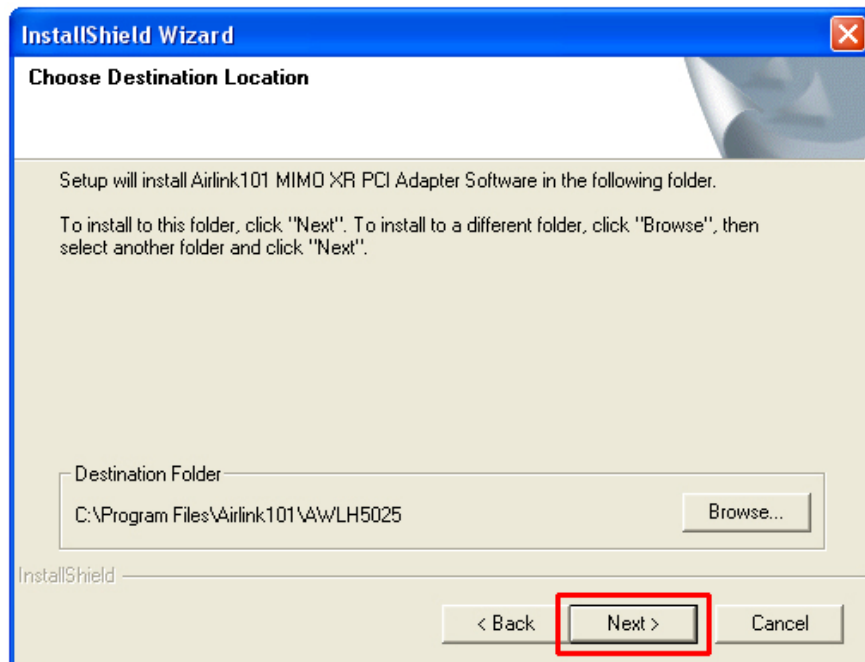


Note: If the Autorun screen doesn't appear automatically go to **Start, Run**, and type **D:\autorun.exe** (where **D** is the letter of your CD drive) and click **OK**.

Step 4 Click **Next** at the welcome screen.



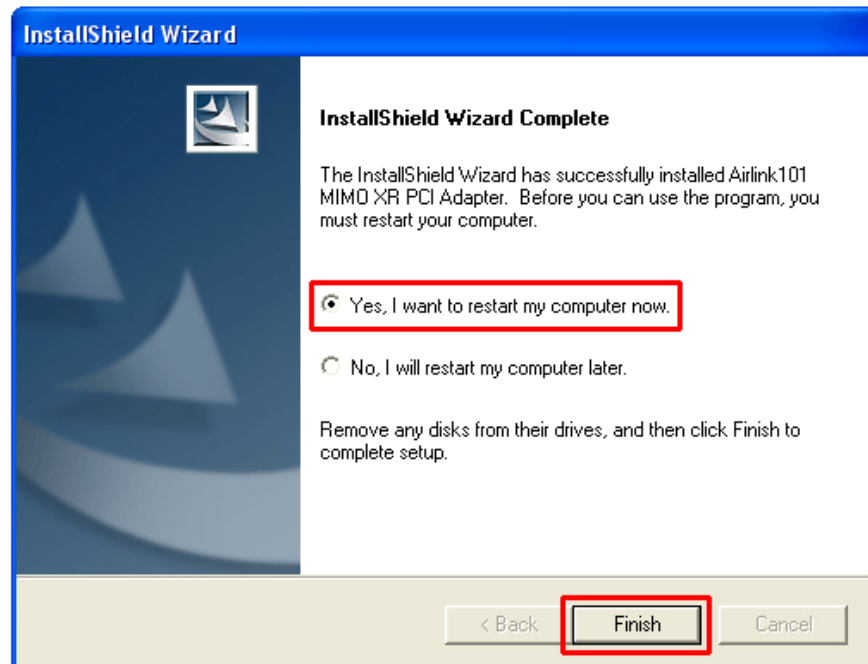
Step 5 Click **Next** to accept the default destination folder.



Step 6 Click **Continue Anyway** at the Windows Logo Screen.
(For Windows 2000, click **Yes** at the Digital Signature Not Found prompt).



Step 7 Verify **Yes, I want to restart my computer now** is selected and click **Finish** to restart your computer.

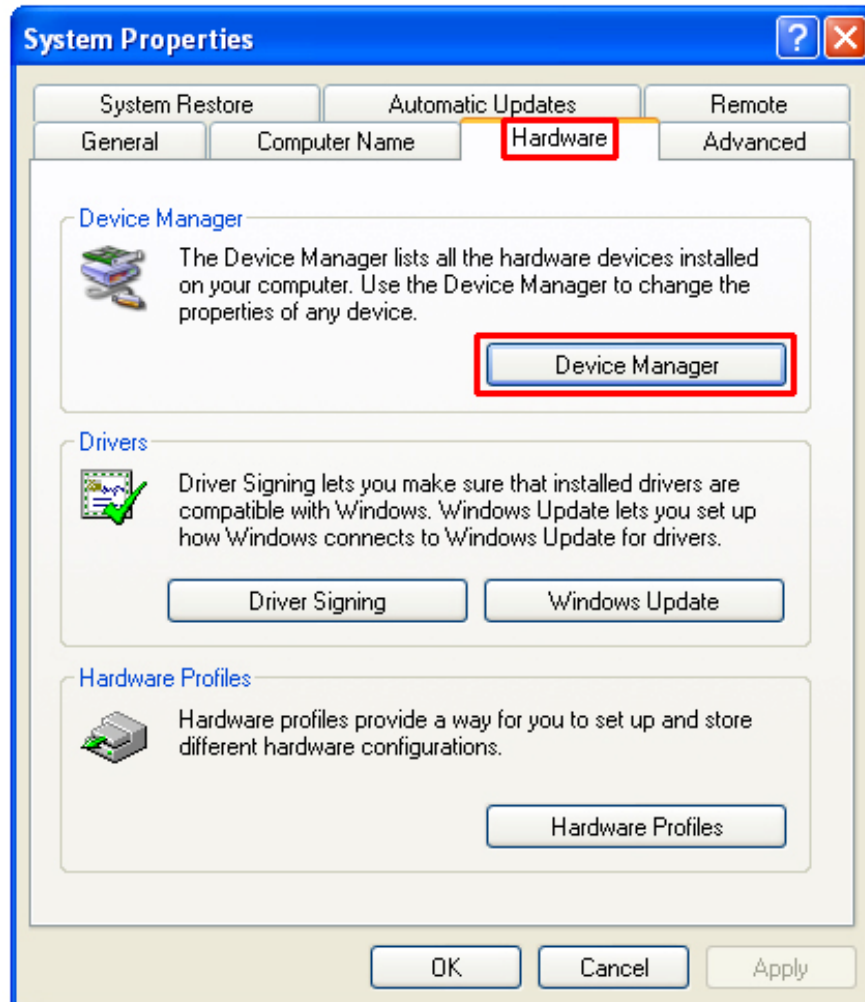


2.2 Verify Driver Installation

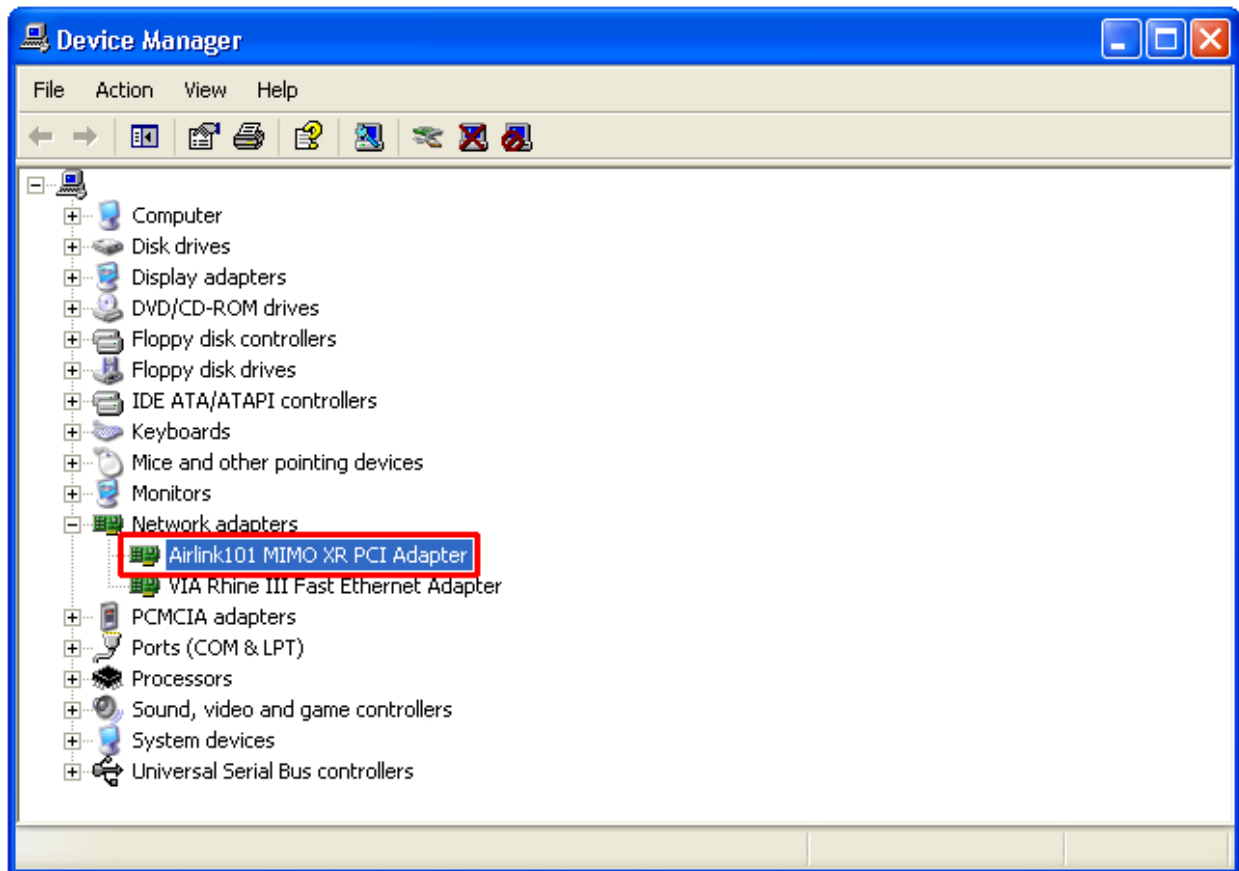
To verify if the driver has been installed successfully, please perform the following steps.

Step 1 Right-click on **My Computer** from your desktop and select **Properties**.

Step 2 Select the **Device Manager** tab. (For Windows 2000/XP, select the **Hardware** tab first then click on **Device Manager**).



Step 3 Expand **Network adapters** from the list and verify that **Airlink101 MIMO XR PCI Adapter** is listed and no yellow question mark is beside it.



If **Airlink101 MIMO XR PCI Adapter** is not listed, or you see a yellow question mark beside it, please re-install the driver again.

3. Configure the Wireless PCI Adapter

This section describes how to connect your **MIMO XR™ Wireless PCI Adapter** to a wireless network.

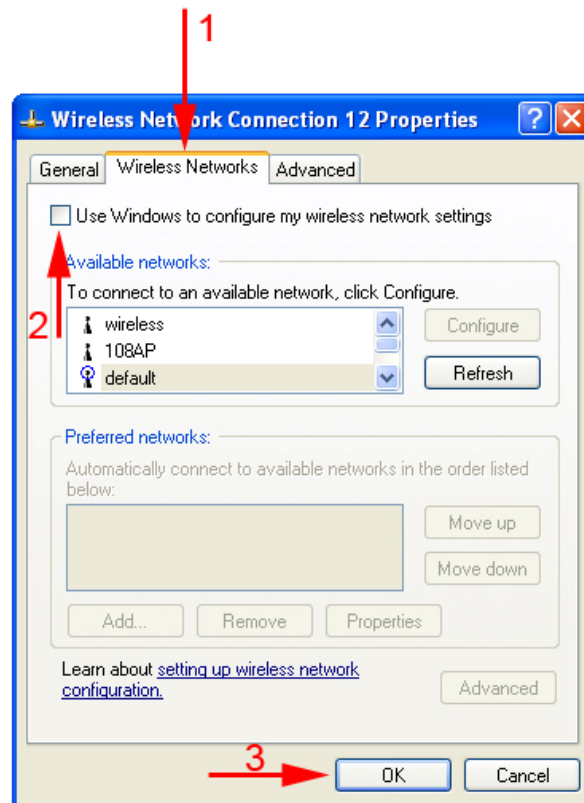
Note to Windows XP Users:

You must disable the Wireless Zero Configuration Utility in order to use the bundled Wireless Utility. Please follow the steps below to disable XP's wireless utility.

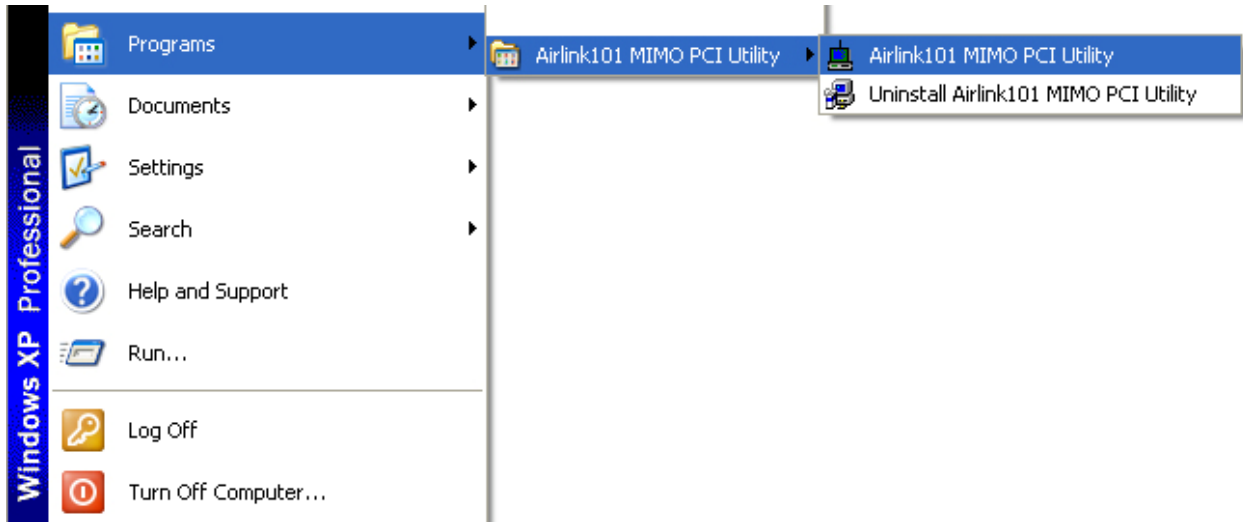
Step 1 Double-click on the **Wireless Network Connection Icon** in the system tray and then click on **Properties** or **Advanced**.



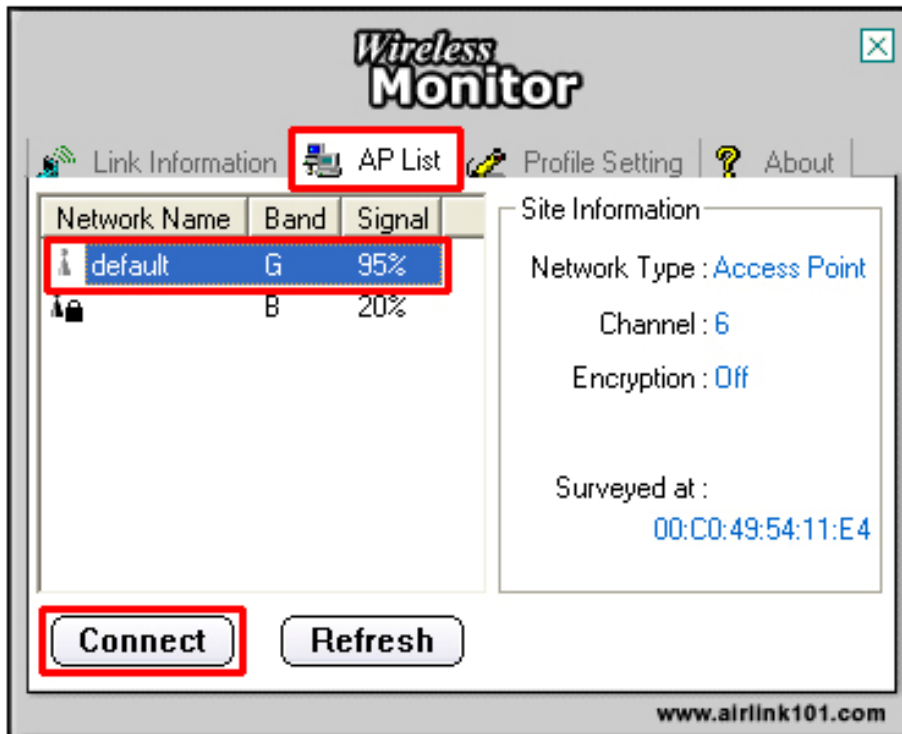
Step 2 Go to the **Wireless Networks** tab, uncheck the “**Use Windows to configure my wireless network settings**” check box and click **OK**.



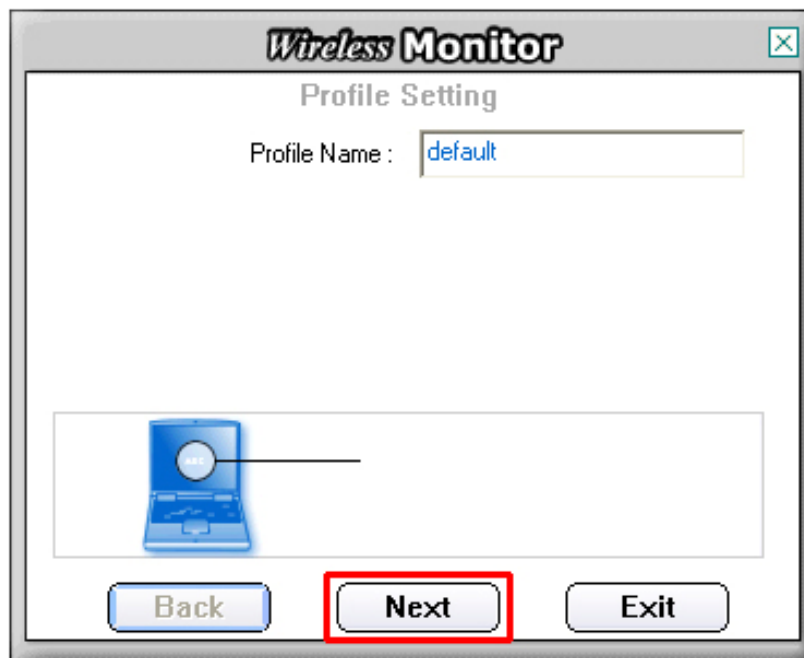
To open the Wireless PCI Adapter's utility go to **Start > (All) Programs > Airlink101 MIMO PCI Utility > Airlink101 MIMO PCI Utility**.



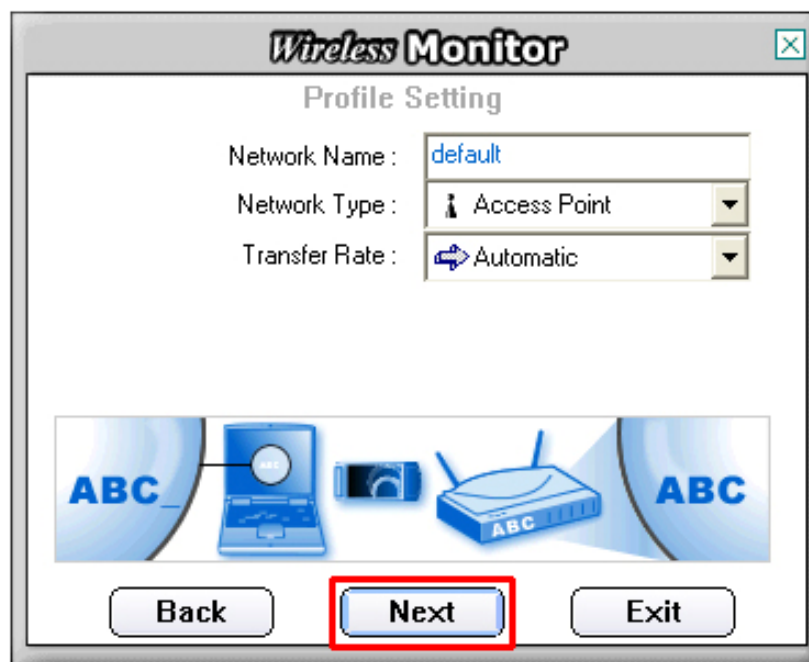
Step 1 Go to the **AP List** tab, select the **SSID** (Network Name) of the wireless network you wish to connect to, and click **Connect**.



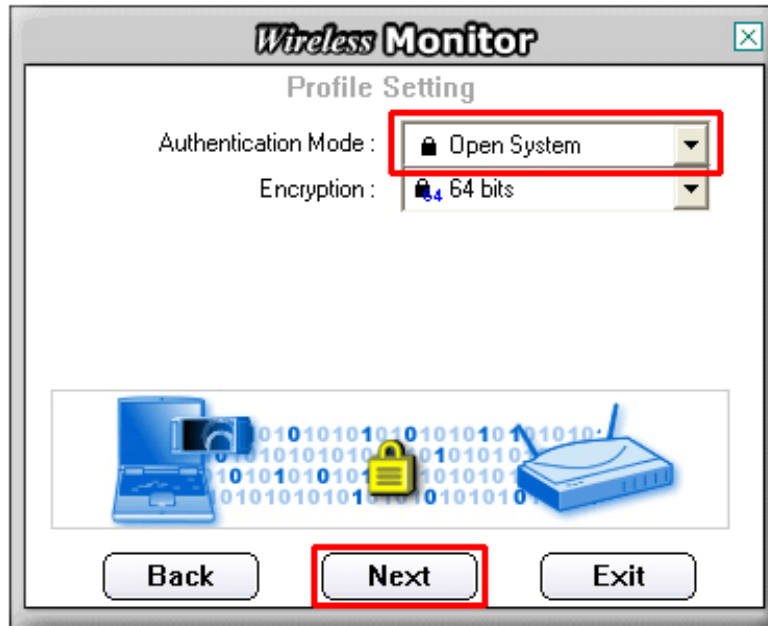
Step 2 If encryption is not enabled for the selected access point / router, skip to step 6. Otherwise, enter a **Profile Name** for your wireless setting and click **Next**.



Step 3 Verify that the **Network Name** matches the **SSID** of your wireless network and click **Next**.

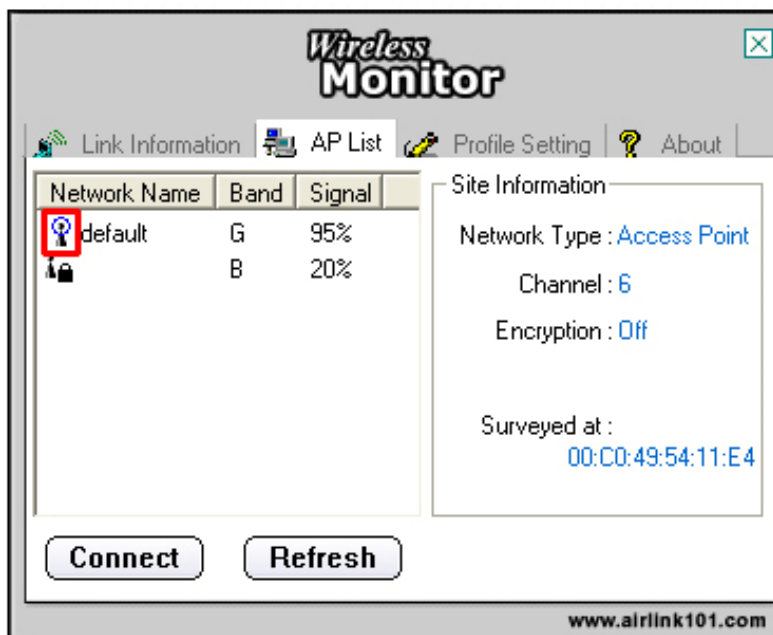


Step 4 Select the proper encryption setting for your wireless router or access point from the drop-down menu and click **Next**.

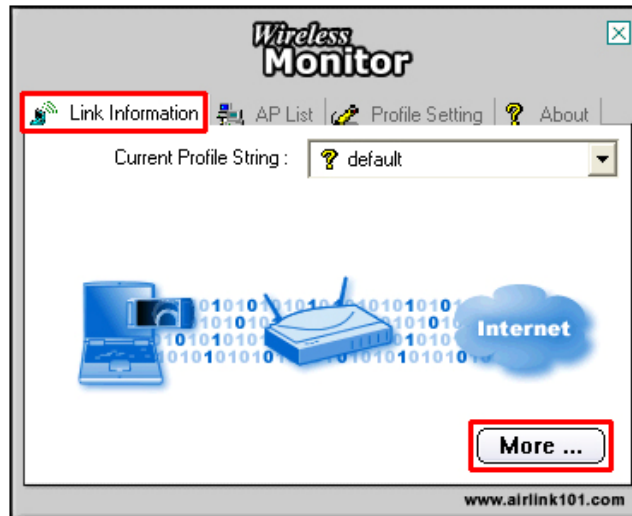


Step 5 Follow the on-screen instructions to complete the encryption settings. Click **Complete** when finished.

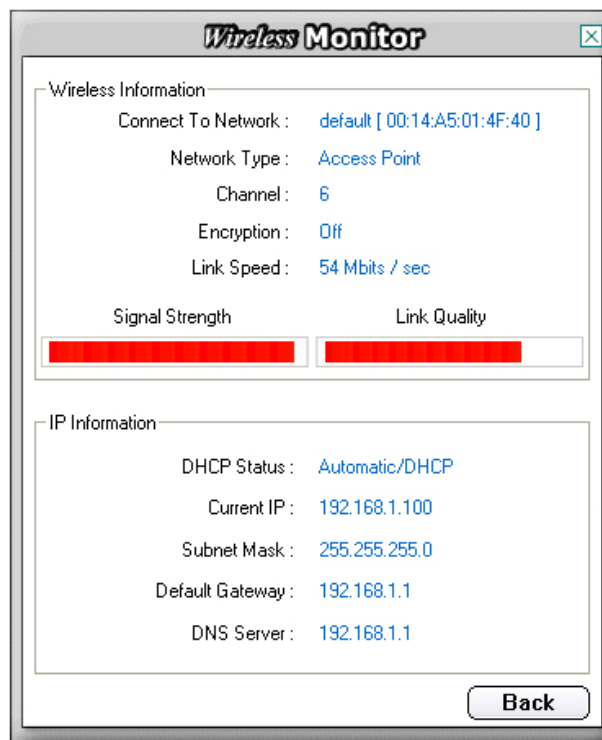
Step 6 You should see a blue circle around the antenna icon indicating a valid connection.



Step 7 Go to the **Link Information** tab and click on the **More** button.



Step 8 Verify that you are receiving adequate Signal Strength and Link Quality and that you have been assigned a valid IP address (instead of all 0's).



If you do not have adequate Signal Strength, try re-orienting the Access Point and/or the Wireless PCI Adapter to get a better reception.

4. Configure the Wireless Utility

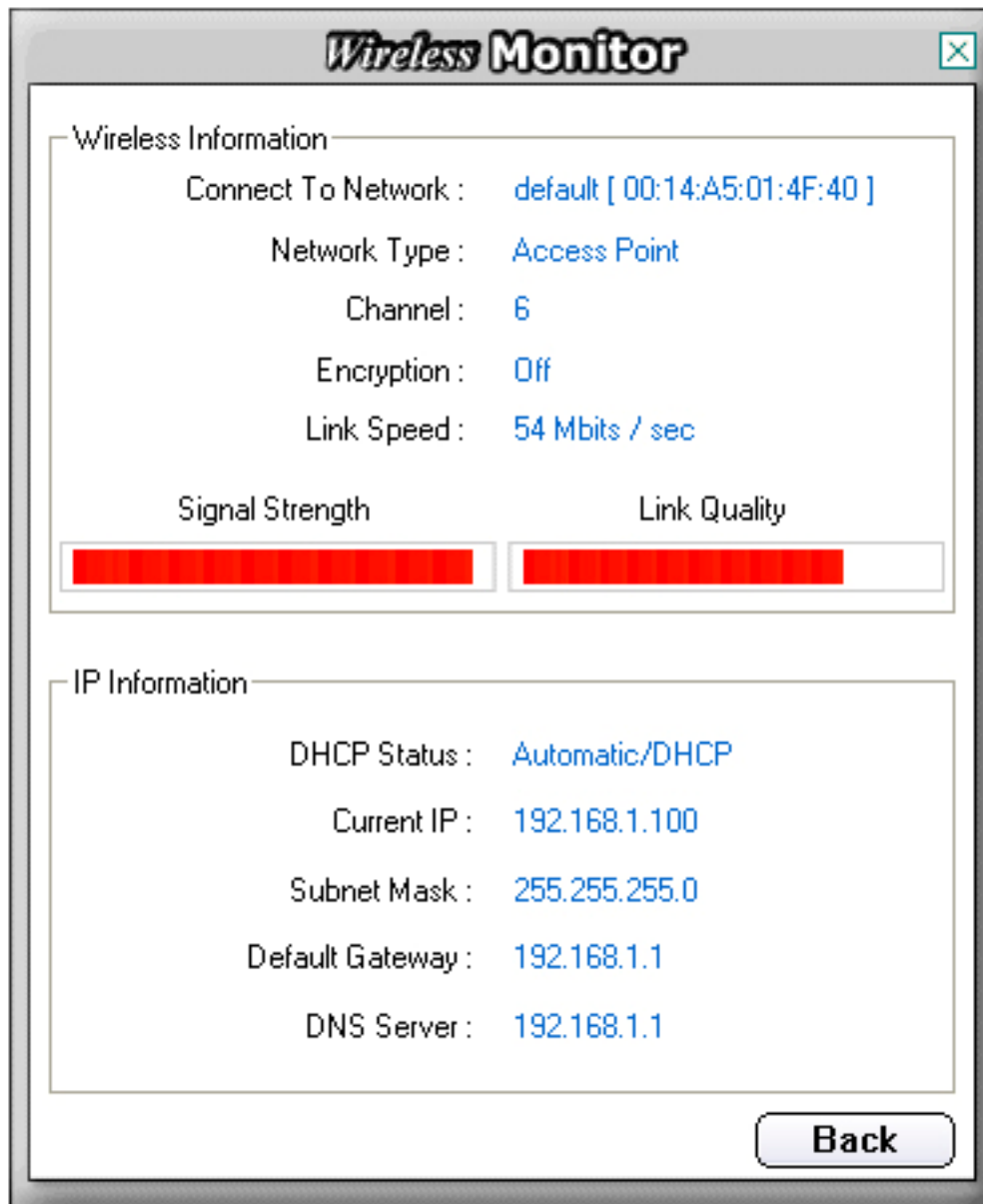
This section describes the various functions of the Wireless Utility that you can configure, including the settings of wireless encryption.

4.1 Link Information

The **Link Information** tab shows the current profile in use as well as details of the current network connection.



Click on the **More** button to see the details of the current network connection.



The Wireless Information displays the current wireless network you are connected to as well as various other statuses such as the Signal Strength and your assigned IP address.

4.2 AP List

The **AP List** tab displays all the available Access Points detected by the Wireless PCI Adapter. Simply select the desired Access Point you wish to connect to and click **Connect**.



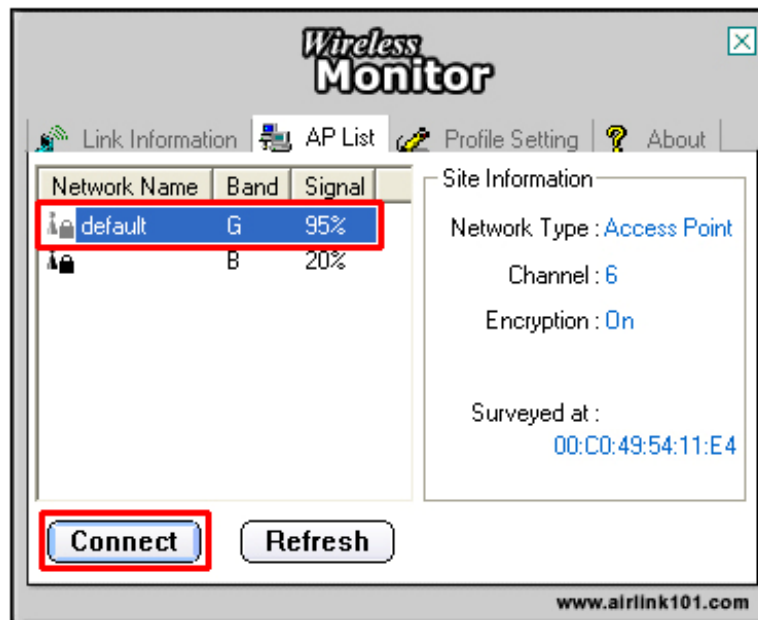
The **Site Information** displays a list of status for the selected AP, including the Channel number and the Encryption status.

4.3 Configure Encryption Settings

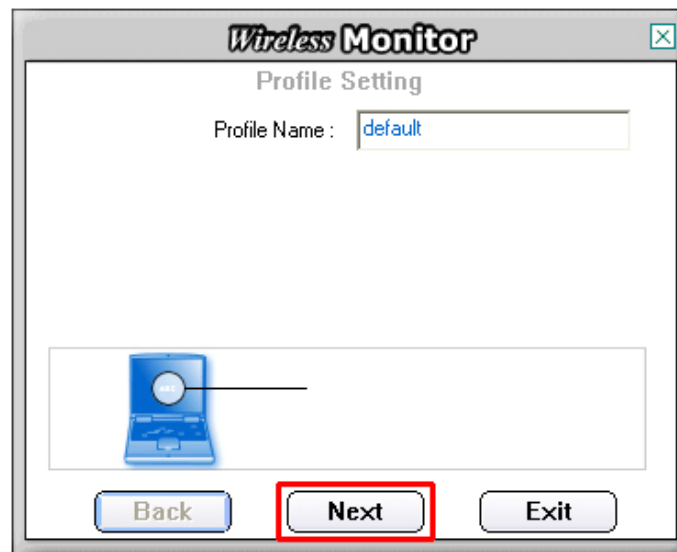
This section describes how to configure encryption settings for the **Wireless PCI Adapter**.

Note: The encryption settings you set for the Adapter must match the same settings of the Access Point/Wireless Router; otherwise, the encryption will not work properly.

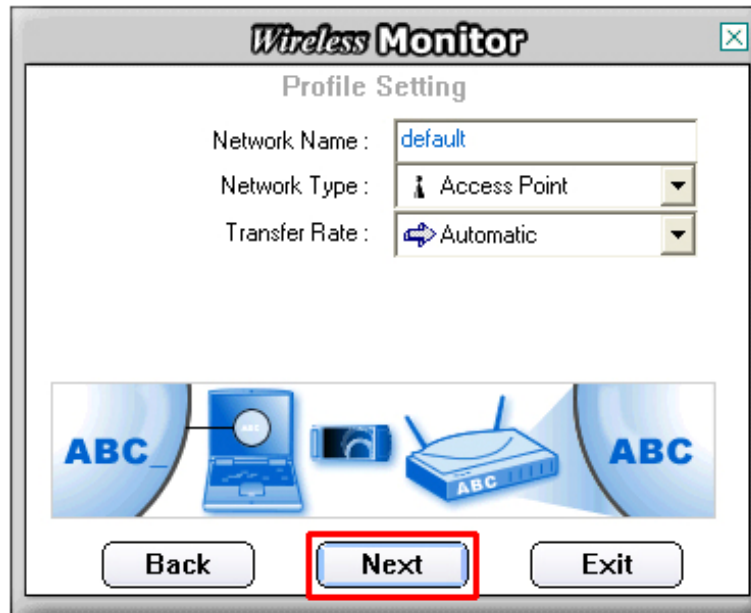
Step 1 From the **AP List** tab, select the Access Point/Wireless Router you want to connect to and click **Connect**.



Step 2 Verify the **Profile Name** is correct and click **Next**.

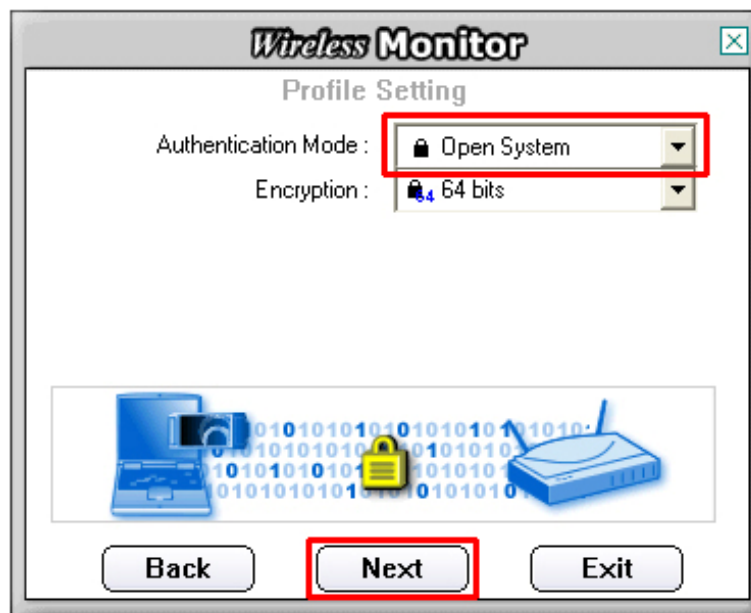


Step 3 Verify the **Network Name (SSID)** is correct and click **Next**.

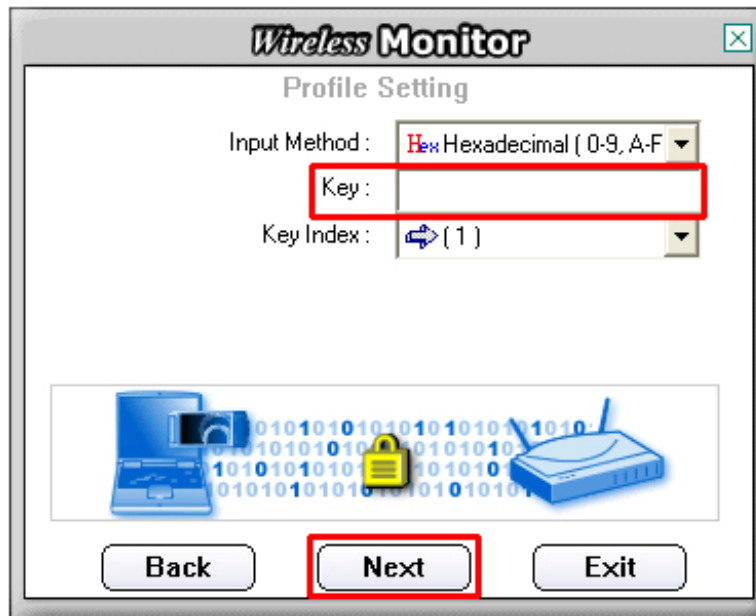


For WEP Settings:

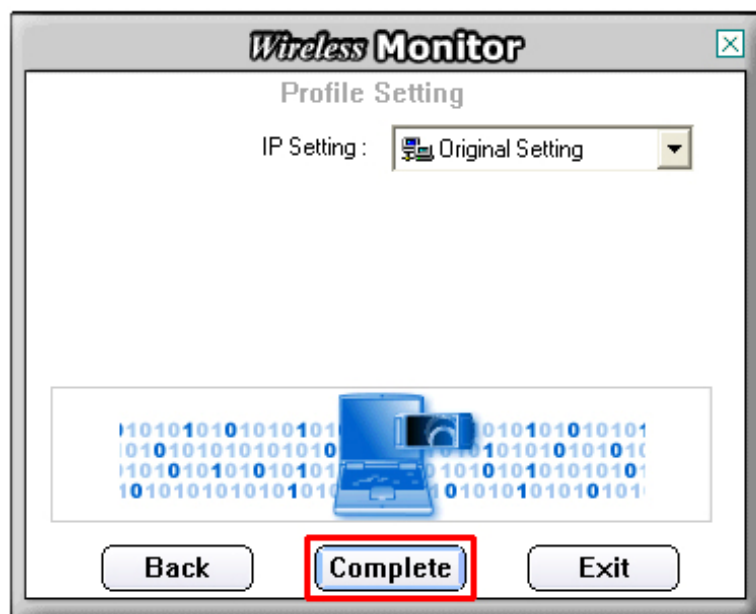
WEP Step 4 Select the appropriate **Authentication Mode** and **Encryption** settings and click **Next**.



WEP Step 5 Select the appropriate **Input Method**, **Key** (password), **Key Index**, and click **Next**.

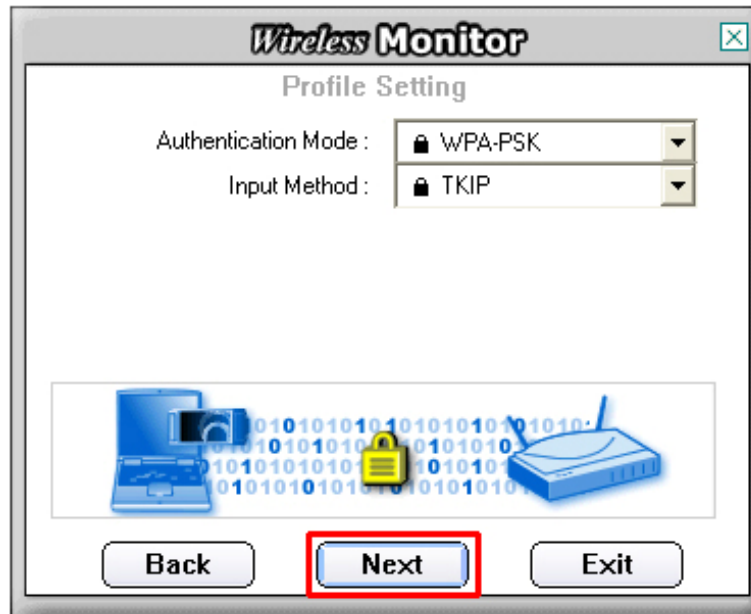


WEP Step 6 Click **Complete** to finish the settings.

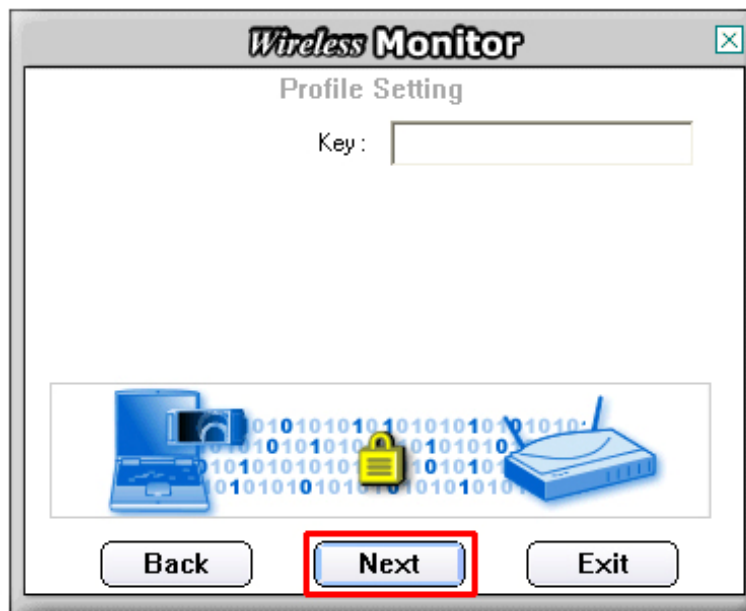


For WPA Settings:

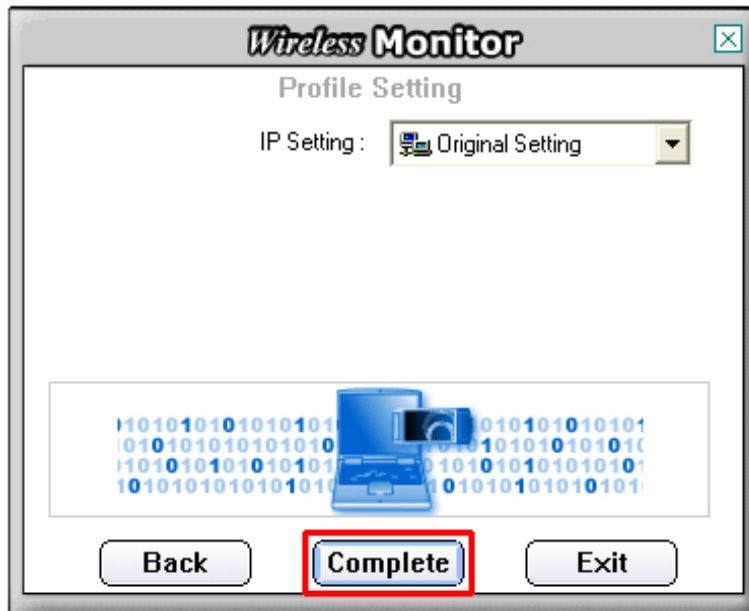
WPA Step 4 Select **WPA-PSK** and the appropriate **Input Method** and click **Next**.



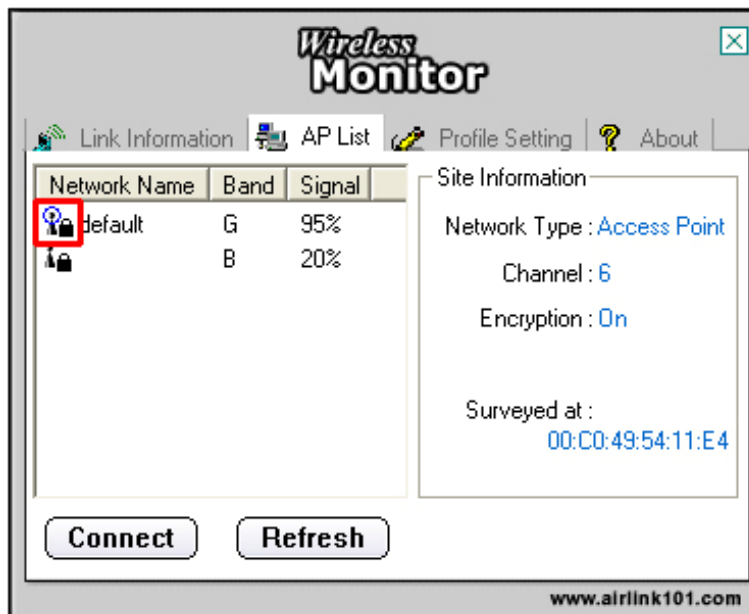
WPA Step 5 Enter the **WPA Key** (passphrase) and click **Next**.



WPA Step 6 Click **Complete** to finish the settings.



Step 7 You should see a blue circle around the antenna icon indicating a valid connection. A lock icon beside the antenna indicates the connection is encrypted.



4.4 Profile Setting

The **Profile Setting** tab lists all the profiles you have created. You can create new profiles for different network environments.

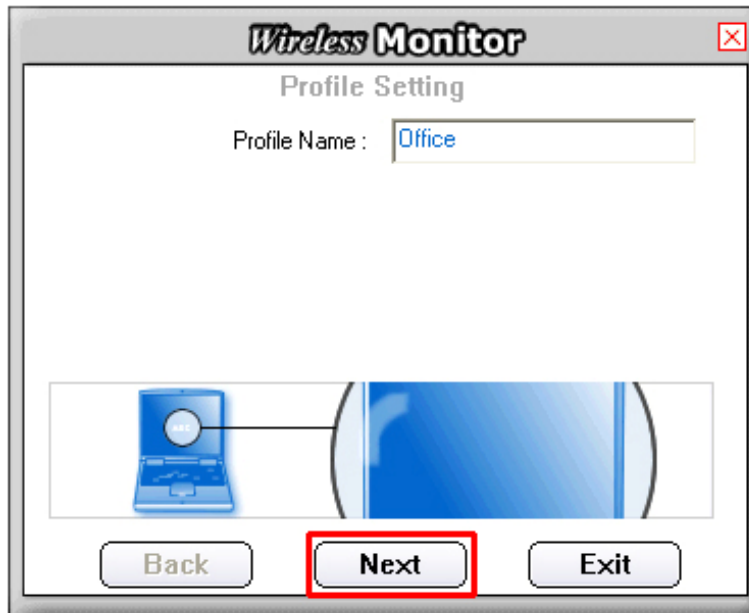


To add a new profile, follow the steps below:

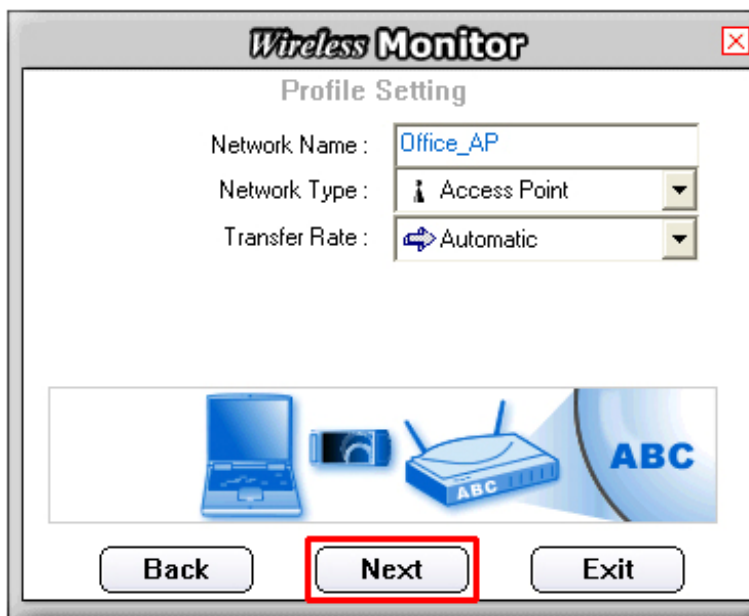
Step 1 Click on the **Add** button.



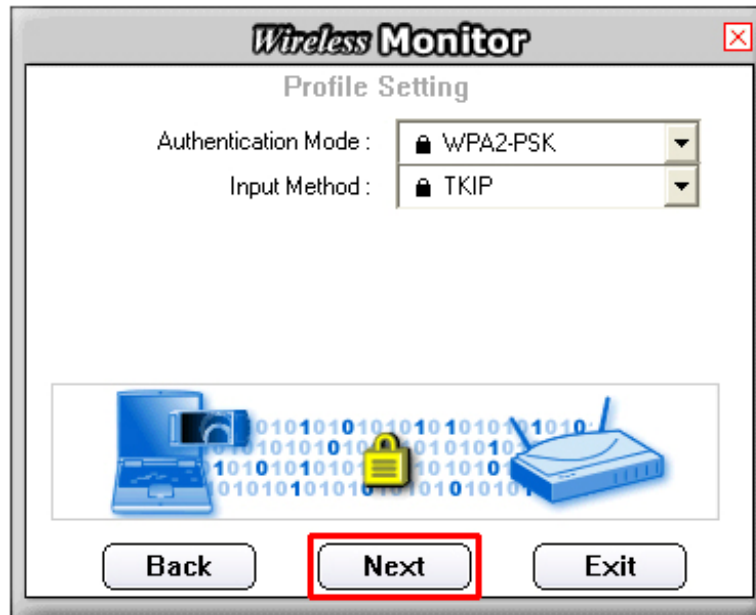
Step 2 Enter a name for your new profile and click **Next**.



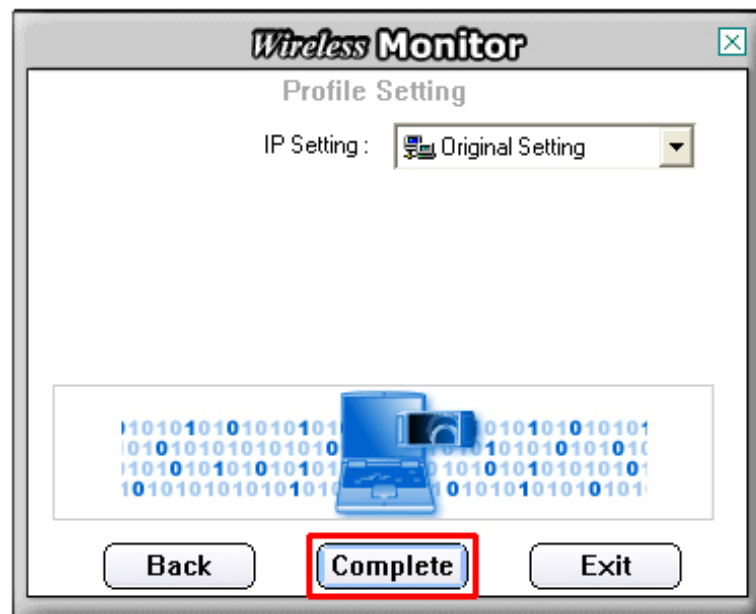
Step 3 Enter the SSID (Network Name) of the wireless network you want to connect to and click **Next**.



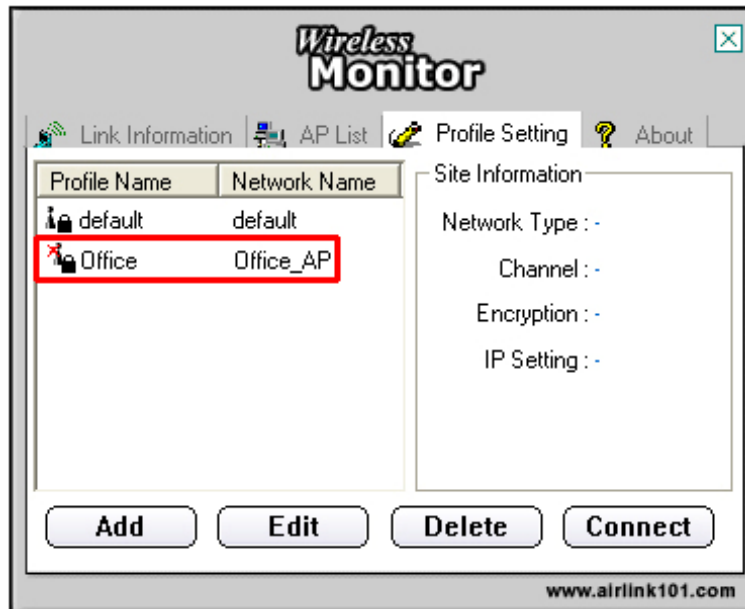
Step 4 Configure any encryption setting if required and click **Next**.



Step 5 Click **Complete** to finish the profile setting.



Step 6 Your new profile will be listed in the Profile List.



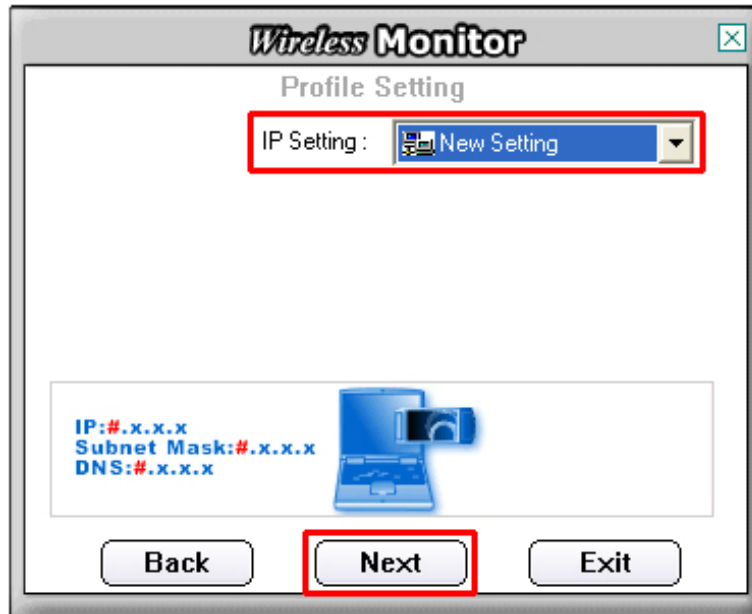
Step 7 You can quickly select which profile you want to use from the **Link Information** tab depending on your network environments without having to reconfigure the settings each time.



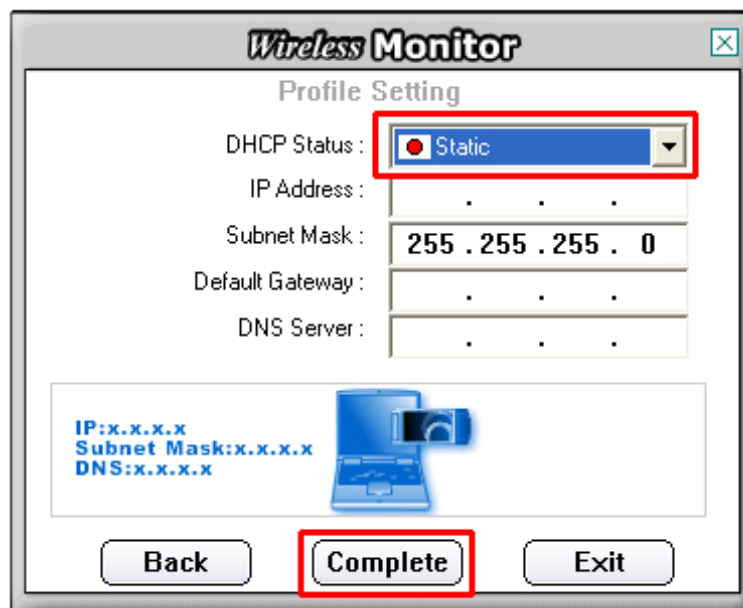
4.5 Static IP Setting

To change the IP address of the wireless adapter to Static IP, follow the steps below:

Step 1 On the last step of 4.4 Profile Setting, under IP setting, select **New Setting** and click **Next**.



Step 2 Select **Static**.



Step 3 Enter in the information and click **Complete** to finish the setting.

4.6 About

The About tab shows the Utility, Driver, and Firmware version as well as the MAC address of the **MIMO XR™ Wireless PCI Adapter**.



Technical Support

E-mail: support@airlink101.com

Toll Free: 1-888-746-3238

Web Site: www.airlink101.com

*Theoretical maximum wireless signal rate based on IEEE standard 802.11g specifications. Actual data throughput will vary. Network conditions and environmental factors, including volume of network traffic, building materials and construction, mix of wireless products used, radio frequency interference (e.g., cordless telephones and microwaves) as well as network overhead lower actual data throughput rate.

Copyright © 2005 AirLink101. All rights reserved. AirLink101, the stylized AirLink101 logo, specific product designations, and all other words and logos that are identified as trademarks and/or service marks are, unless noted otherwise, the trademarks and service marks of AirLink101. All other product or service names are the property of their respective holders. AirLink101 products are protected under numerous U.S. and foreign patents and pending applications, mask work rights, and copyrights. MIMO XR is a registered trademark of Ralink Technology Corporation.